

## Faculty and Staff - Fall 2021

Source: IPEDS Human Resources Survey

### Total Employees and FTE by Occupational Category

Occupational category	Total		FTE
	#	%	#
<b>Total employees</b>	<b>1,834</b>	<b>100%</b>	<b>1,639.33</b>
<b>Faculty</b>	<b>611</b>	<b>33%</b>	<b>467.00</b>
Business/Finance	128	7%	127.33
Community/Legal/Media	115	6%	111.67
Computer/Engineering/Science	66	4%	66.00
Healthcare Practitioners	18	1%	17.33
Librarians/Ed. Services	130	7%	128.00
Management	152	8%	152.00
<b>Professional Staff</b>	<b>609</b>	<b>33%</b>	<b>602.33</b>
Construction/Maintenance	64	3%	64.00
Office/Admin. Support	200	11%	191.33
Production/Transportation	6	0%	5.33
Sales	9	0%	7.00
Service	335	18%	302.33
<b>Service/Support Staff</b>	<b>614</b>	<b>33%</b>	<b>570.00</b>

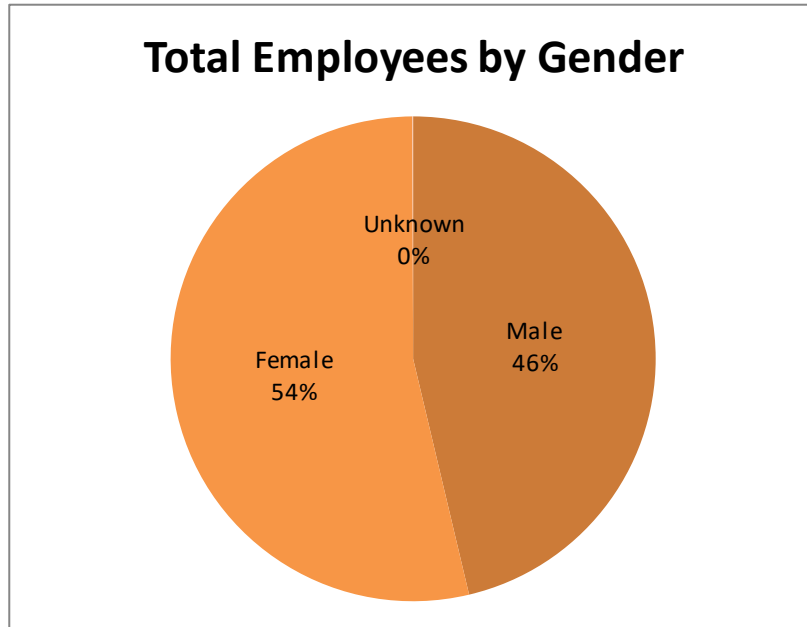
Note: Faculty & Staff FTE is calculated using (Full Time + (1/3 Part-Time)).

### Full-Time/Part-Time Status of Employees by Occupational Category

Occupational category	Full-time		Part-time		Total
	#	%	#	%	#
<b>Total employees</b>	<b>1,542</b>	<b>84%</b>	<b>292</b>	<b>16%</b>	<b>1,834</b>
<b>Faculty</b>	<b>395</b>	<b>65%</b>	<b>216</b>	<b>35%</b>	<b>611</b>
Business/Finance	127	99%	1	1%	128
Community/Legal/Media	110	96%	5	4%	115
Computer/Engineering/Science	66	100%	0	0%	66
Healthcare Practitioners	17	94%	1	6%	18
Librarians/Ed. Services	127	98%	3	2%	130
Management	152	100%	0	0%	152
<b>Professional Staff</b>	<b>599</b>	<b>98%</b>	<b>10</b>	<b>2%</b>	<b>609</b>
Construction/Maintenance	64	100%	0	0%	64
Office/Admin. Support	187	94%	13	7%	200
Production/Transportation	5	83%	1	17%	6
Sales	6	67%	3	33%	9
Service	286	85%	49	15%	335
<b>Service/Support Staff</b>	<b>548</b>	<b>89%</b>	<b>66</b>	<b>11%</b>	<b>614</b>

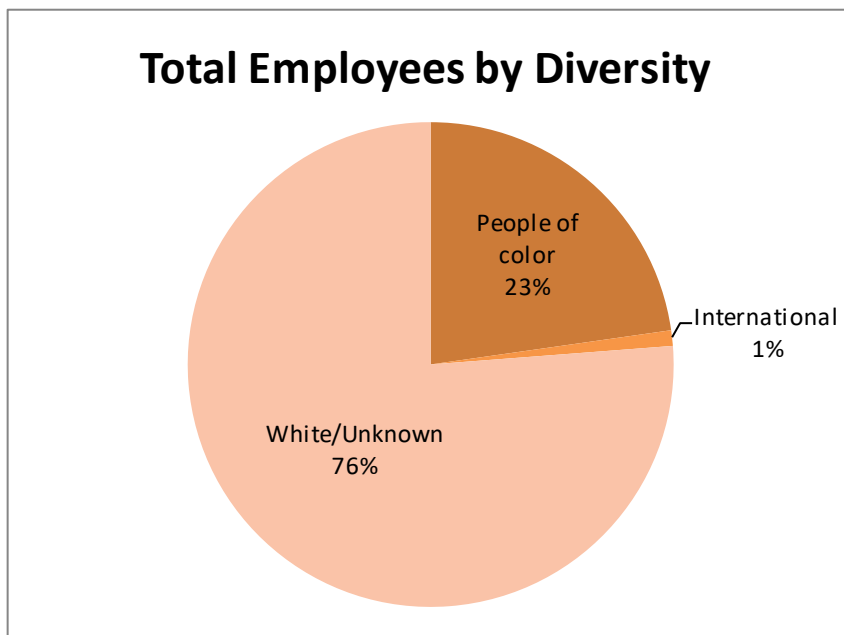
### Gender of Employees by Occupational Category

Occupational category	Male		Female		Unknown		Total
	#	%	#	%	#	%	#
Faculty	325	53%	286	47%	0	0%	611
Professional Staff	268	44%	341	56%	0	0%	609
Service/Support Staff	256	42%	357	58%	1	0%	614
<b>Total</b>	<b>849</b>	<b>46%</b>	<b>984</b>	<b>54%</b>	<b>1</b>	<b>0%</b>	<b>1,834</b>



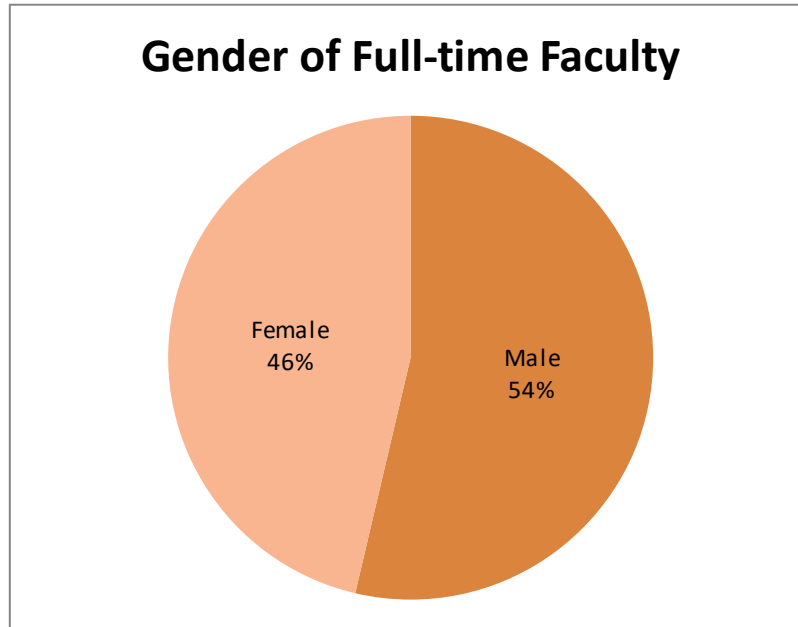
## Race/Ethnicity of Total Employees by Occupational Category

Race/Ethnicity	Faculty		Professional		Service/Support		Total	
	#	%	#	%	#	%	#	%
American Indian or Alaska Native	1	0%	3	0%	1	0%	5	0%
Asian	31	5%	13	2%	12	2%	56	3%
Black or African American	48	8%	66	11%	181	29%	295	16%
Hispanic/Latino	21	3%	13	2%	17	3%	51	3%
Native Hawaiian or Other Pacific	0	0%	0	0%	0	0%	0	0%
Nonresident alien	15	2%	1	0%	3	0%	19	1%
Race and ethnicity unknown	6	1%	9	1%	10	2%	25	1%
Two or more races	6	1%	3	0%	1	0%	10	1%
White	483	79%	501	82%	389	63%	1,373	75%
<b>Total</b>	<b>611</b>	<b>100%</b>	<b>609</b>	<b>100%</b>	<b>614</b>	<b>100%</b>	<b>1,834</b>	<b>100%</b>



### Total Faculty by Gender

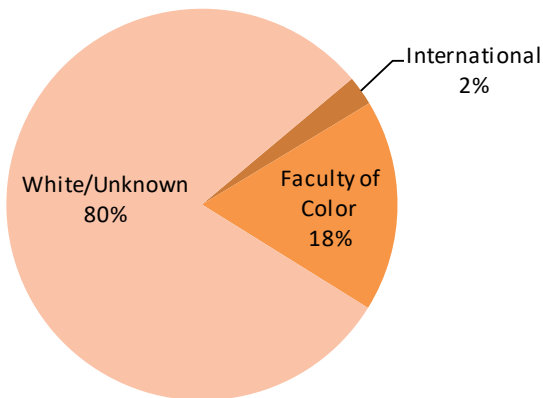
Gender	Full-time		Part-time		Total	
	#	%	#	%	#	%
Male	212	54%	113	52%	325	53%
Female	183	46%	103	48%	286	47%
<b>Total</b>	<b>395</b>	<b>100%</b>	<b>216</b>	<b>100%</b>	<b>611</b>	<b>100%</b>



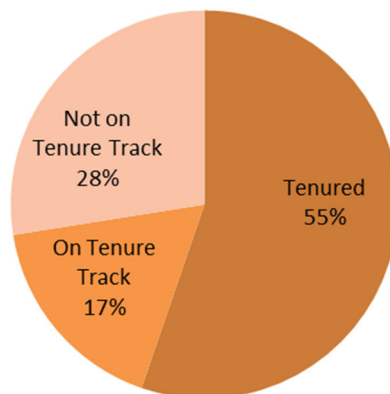
### Total Faculty by Race/Ethnicity

Race/Ethnicity	Full-time		Part-time		Total	
	#	%	#	%	#	%
American Indian or Alaska Native	1	0%	0	0%	1	0%
Asian	25	6%	6	3%	31	5%
Black or African American	27	7%	21	10%	48	8%
Hispanic/Latino	14	4%	7	3%	21	3%
Native Hawaiian or Other Pacific Islander	0	0%	0	0%	0	0%
Nonresident alien	15	4%	0	0%	15	2%
Race and ethnicity unknown	3	1%	3	1%	6	1%
Two or more races	4	1%	2	1%	6	1%
White	306	77%	177	82%	483	79%
<b>Total</b>	<b>395</b>	<b>100%</b>	<b>216</b>	<b>100%</b>	<b>611</b>	<b>100%</b>

### Full-time Faculty by Diversity

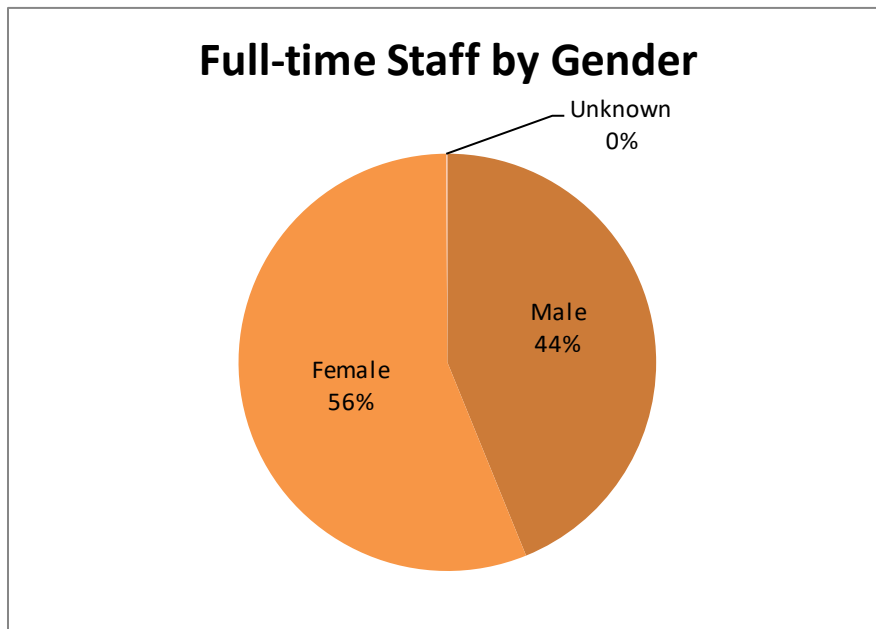


### Tenure Status of Full-Time Faculty



### Total Staff by Gender

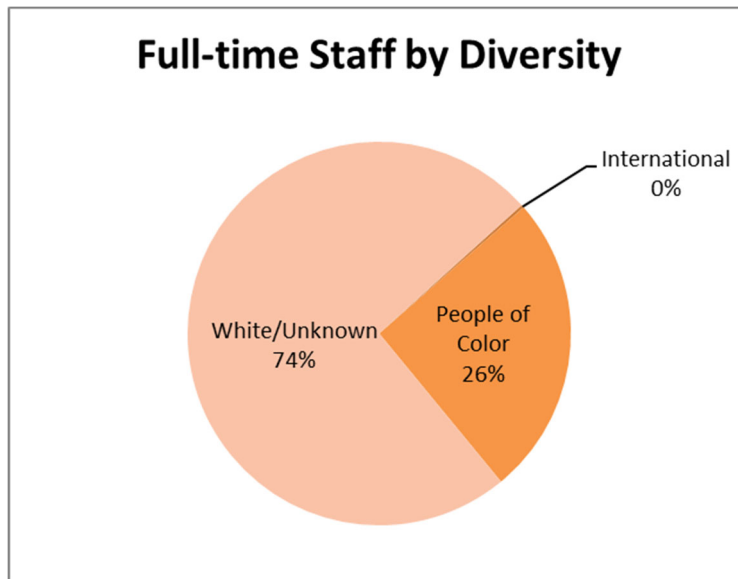
Gender	Full-time		Part-time		Total	
	#	%	#	%	#	%
Male	503	44%	21	28%	524	43%
Female	643	56%	55	72%	698	57%
Unknown	1	0%	0	0%	1	0%
<b>Total</b>	<b>1,147</b>	<b>100%</b>	<b>76</b>	<b>100%</b>	<b>1,223</b>	<b>100%</b>



NOTE: The Staff numbers include all non-faculty employees (those in the following occupational categories: Professional Staff and Service/Support Staff).

### Total Staff by Race/Ethnicity

Race/Ethnicity	Full-time		Part-time		Total	
	#	%	#	%	#	%
American Indian or Alaska Native	4	0%	0	0%	4	0%
Asian	23	2%	2	3%	25	2%
Black or African American	236	21%	11	14%	247	20%
Hispanic/Latino	27	2%	3	4%	30	2%
Native Hawaiian or Other Pacific Islander	0	0%	0	0%	0	0%
Nonresident alien	3	0%	1	1%	4	0%
Race and ethnicity unknown	18	2%	1	1%	19	2%
Two or more races	4	0%	0	0%	4	0%
White	832	73%	58	76%	890	73%
<b>Total</b>	<b>1147</b>	<b>100%</b>	<b>76</b>	<b>100%</b>	<b>1,223</b>	<b>100%</b>



UR Occupational Categories	IPEDS HR Occupational Categories	HR Primary Function/Occupational Activity Categories
Faculty	Postsecondary Teachers (by function) <sup>1</sup>	<ul style="list-style-type: none"> <li>◦ Persons whose primary responsibility is instruction, research, and/or public service:               <ul style="list-style-type: none"> <li>- Primarily Instruction</li> <li>- Instruction combined with research and/or public service</li> <li>- Primarily Research</li> <li>- Primarily Public Service</li> </ul> </li> </ul>
	<ul style="list-style-type: none"> <li>◦ Instruction</li> <li>◦ Instruction combined with research and/or public service</li> <li>◦ Research</li> <li>◦ Public Service</li> </ul>	◦ Graduate Assistants (various categories)
Professional Staff	Graduate Assistants – Teaching <sup>2</sup> plus various categories	◦ Graduate Assistants (various categories)
	Librarians, Curators, and Archivists <sup>3</sup>	◦ Other professional (support/service)
	Student and Academic Affairs and Other Education Services Occupations	◦ Other professional (support/service)
	Management Occupations	◦ Technical and paraprofessional
	Business and Financial Operations Occupations	◦ Executive/administrative/managerial
	Computer, Engineering, and Science Occupations	◦ Other professional (support/service)
	Community, Social Service, Legal, Arts, Design, Entertainment, Sports and Media Occupations	◦ Technical and paraprofessional
Healthcare Practitioners and Technical Occupations	◦ Other professional (support/service)	
Service/Support Staff	Service Occupations	◦ Technical and paraprofessional
	Sales and Related Occupations	◦ Service/Maintenance
	Office and Administrative Support Occupations	◦ Not specifically mentioned in IPEDS
	Natural Resources, Construction, and Maintenance Occupations	◦ Clerical and secretarial
	Production, Transportation, and Material Moving Occupations	◦ Service/Maintenance
		◦ Skilled Crafts
		◦ Service/Maintenance

<sup>1</sup> For degree-granting institutions that have 15 or more full-time staff members, “Postsecondary Teachers” are reported by the following functions: Instruction; Instruction combined with research and/or public service; Research; and Public Service. For all other institutions, “Postsecondary Teachers” are reported in the single category. Also, full-time instructional staff is a sub-set of “Postsecondary Teachers” and includes the following two functions: 1) Instruction and 2) Instruction combined with research and/or public service.

<sup>2</sup> Only degree-granting institutions report Graduate Assistants (GAs). In addition to the GA – Teaching category, GAs are also reported separately by the following categories: Research; Management; Business and Financial Operations; Computer, Engineering, and Science; Community Service, Legal, Arts, and Media; Library and Instructional Support; and Healthcare Practitioners and Technical.

<sup>3</sup> For degree-granting institutions that have 15 or more full-time staff members, library-related occupations are reported separately as: Archivists, Curators, and Museum Technicians; Librarians; and Library Technicians. For all other institutions, library-related occupations are reported in the single category called “Librarians, Curators, and Archivists.”