

Faculty and Staff - Fall 2016

Source: IPEDS HR

Total Employees and FTE by Occupational Category

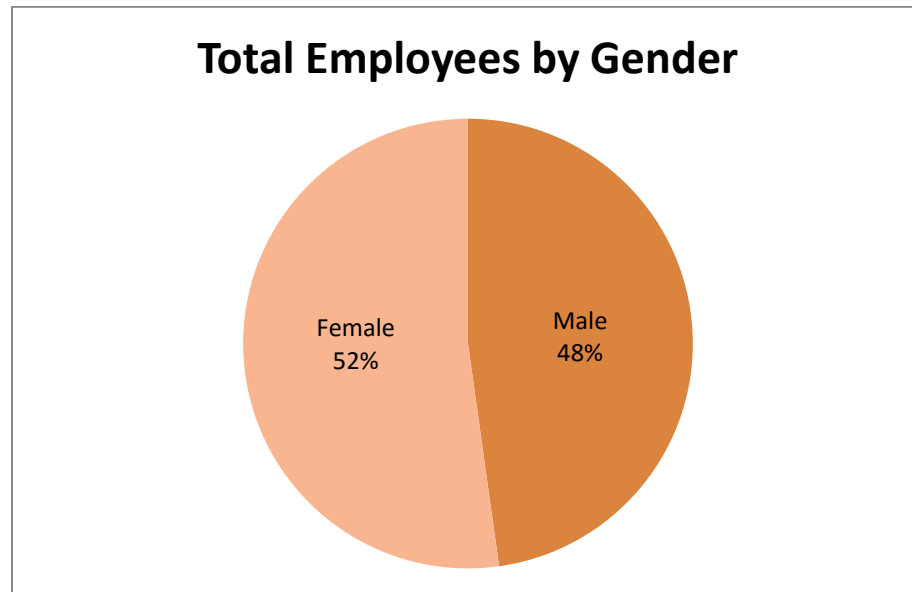
Occupational category	Total		FTE
	#	%	#
Total employees	1,879	100%	1,673.00
Faculty	638	34%	486.67
Librarians/Ed. Services	137	7%	135.67
Management	161	9%	161.00
Business/Finance	101	5%	100.33
Computer/Engineering/Science	81	4%	80.33
Community/Legal/Media	103	5%	99.00
Healthcare Practitioners	15	1%	13.00
Subtotal Professional Staff	598	32%	589.33
Service	344	18%	312.00
Sales	4	0%	4.00
Office/Admin. Support	223	12%	210.33
Construction/Maintenance	65	3%	65.00
Production/Transportation	7	0%	5.67
Subtotal Service/Support Staff	643	34%	597.00

Full-Time/Part-Time Status of Employees by Occupational Category

Occupational category	Full-time		Part-time		Total
	#	%	#	%	#
Total employees	1,570	84%	309	16%	1,879
<i>Faculty</i>	411	64%	227	36%	638
Librarians/Ed. Services	135	99%	2	1%	137
Management	161	100%	0	0%	161
Business/Finance	100	99%	1	1%	101
Computer/Engineering/Science	80	99%	1	1%	81
Community/Legal/Media	97	94%	6	6%	103
Healthcare Practitioners	12	80%	3	20%	15
<i>Subtotal Professional Staff</i>	585	98%	13	2%	598
Service	296	86%	48	14%	344
Sales	4	100%	0	0%	4
Office/Admin. Support	204	91%	19	9%	223
Construction/Maintenance	65	100%	0	0%	65
Production/Transportation	5	71%	2	29%	7
<i>Subtotal Service/Support Staff</i>	574	89%	69	11%	643

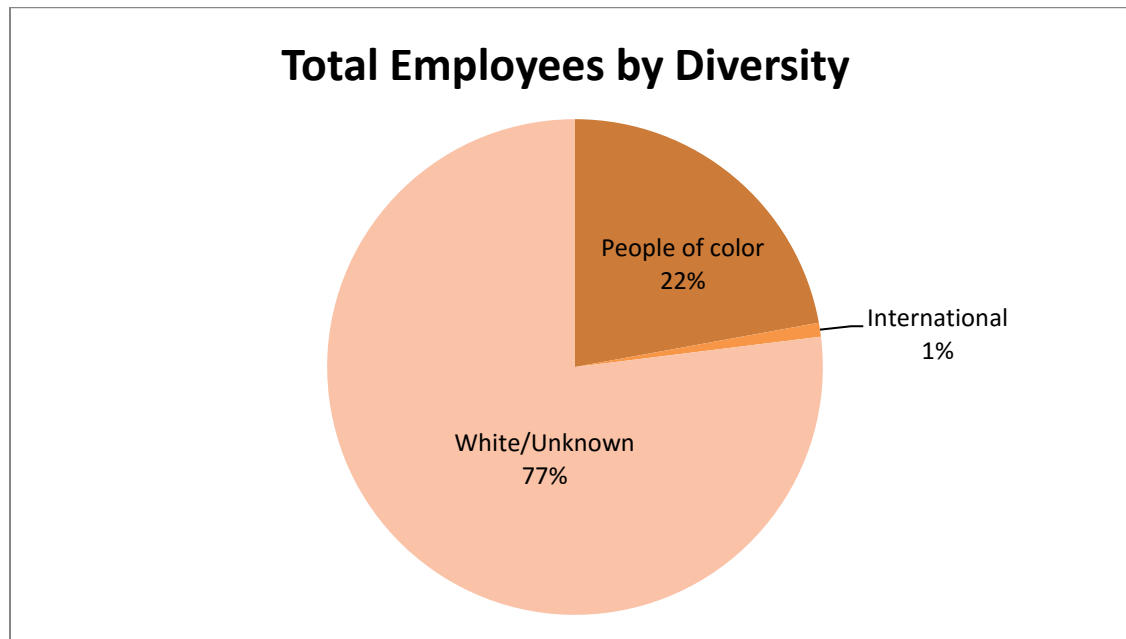
Gender of Employees by Occupational Category

Occupational category	Male		Female		Total
	#	%	#	%	#
Faculty	359	56%	279	44%	638
Professional Staff	269	45%	329	55%	598
Service/Support Staff	270	42%	373	58%	643
Total	898	48%	981	52%	1,879



Race/Ethnicity of Total Employees by Occupational Category

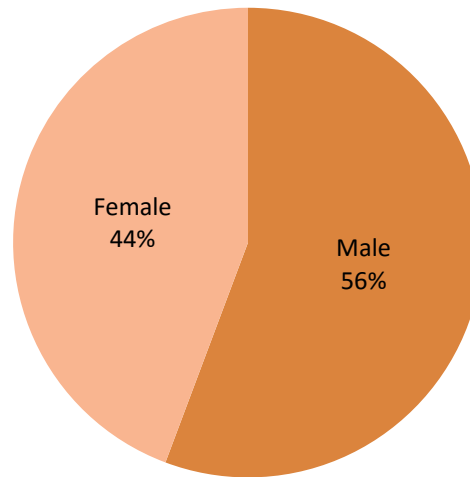
Race/Ethnicity	Faculty		Professional Staff		Service/Support Staff		Total	
	#	%	#	%	#	%	#	%
Nonresident alien	11	2%	3	1%	3	0%	17	1%
Hispanic/Latino	19	3%	10	2%	13	2%	42	2%
American Indian or Alaska Native	0	0%	1	0%	1	0%	2	0%
Asian	21	3%	12	2%	18	3%	51	3%
Black or African American	37	6%	64	11%	210	33%	311	17%
Native Hawaiian or Other Pacific Islander	0	0%	0	0%	0	0%	0	0%
White	544	85%	492	82%	389	60%	1,425	76%
Two or more races	3	0%	5	1%	2	0%	10	1%
Race and ethnicity unknown	3	0%	11	2%	7	1%	21	1%
Total	638	100%	598	100%	643	100%	1,879	100%



Total Faculty by Gender

Gender	Full-time		Part-time		Total	
	#	%	#	%	#	%
Male	229	56%	130	57%	359	56%
Female	182	44%	97	43%	279	44%
Total	411	100%	227	100%	638	100%

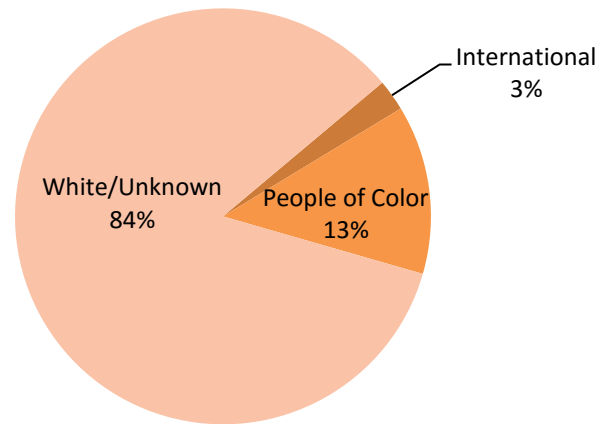
Gender of Full-time Faculty



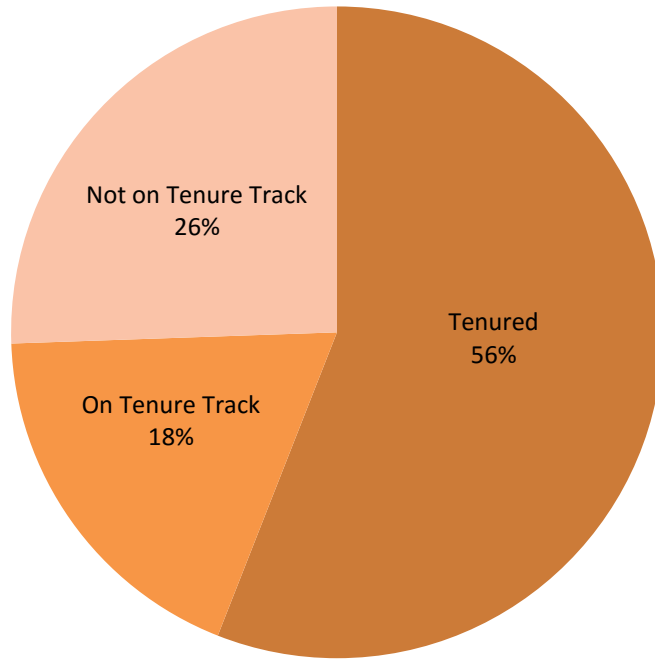
Total Faculty by Race/Ethnicity

Race/Ethnicity	Full-time		Part-time		Total	
	#	%	#	%	#	%
Nonresident alien	10	2%	1	0%	11	2%
Hispanic/Latino	16	4%	3	1%	19	3%
American Indian or Alaska Native	0	0%	0	0%	0	0%
Asian	15	4%	6	3%	21	3%
Black or African American	20	5%	17	7%	37	6%
Native Hawaiian or Other Pacific Islander	0	0%	0	0%	0	0%
White	346	84%	198	87%	544	85%
Two or more races	3	1%	0	0%	3	0%
Race and ethnicity unknown	1	0%	2	1%	3	0%
Total	411	100%	227	100%	638	100%

Full-time Faculty by Diversity



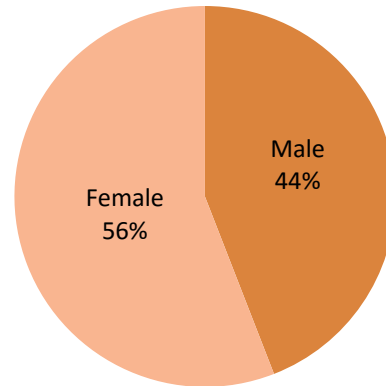
Tenure Status of Full-Time Faculty



Total Staff* by Gender

Gender	Full-time		Part-time		Total	
	#	%	#	%	#	%
Male	511	44%	28	34%	539	43%
Female	648	56%	54	66%	702	57%
Total	1,159	100%	82	100%	1,241	100%

Full-time Staff by Gender

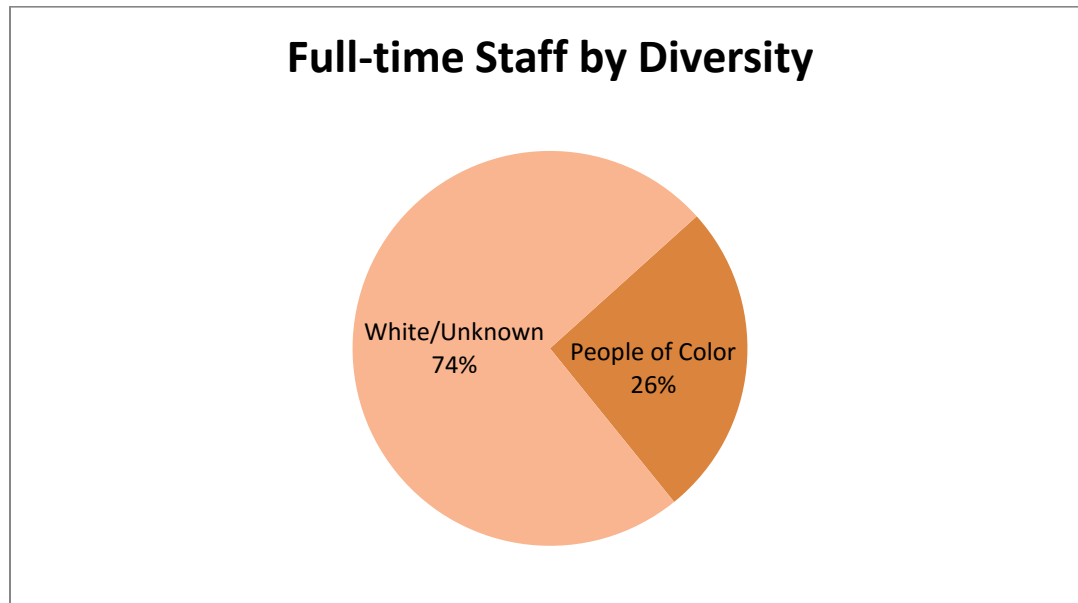


*The Staff numbers include all non-faculty employees (those in the following occupational categories: Professional Staff and Service/Support Staff).

Total Staff by Race/Ethnicity

Race/Ethnicity	Full-time		Part-time		Total	
	#	%	#	%	#	%
Nonresident alien	6	1%	0	0%	6	0%
Hispanic/Latino	20	2%	3	4%	23	2%
American Indian or Alaska Native	2	0%	0	0%	2	0%
Asian	29	3%	1	1%	30	2%
Black or African American	240	21%	34	41%	274	22%
Native Hawaiian or Other Pacific Islander	0	0%	0	0%	0	0%
White	838	72%	43	52%	881	71%
Two or more races	7	1%	0	0%	7	1%
Race and ethnicity unknown	17	1%	1	1%	18	1%
Total	1,159	100%	82	100%	1,241	100%

Full-time Staff by Diversity



UR Occupational Categories	IPEDS HR Occupational Categories	HR Primary Function/Occupational Activity Categories
Faculty	Postsecondary Teachers (by function) <ul style="list-style-type: none"> ◦ Instruction ◦ Instruction combined with research and/or public service ◦ Research ◦ Public Service 	<ul style="list-style-type: none"> ◦ Persons whose primary responsibility is instruction, research, and/or public service: <ul style="list-style-type: none"> - Primarily Instruction - Instruction combined with research and/or public service - Primarily Research - Primarily Public Service
	Graduate Assistants – Teaching plus various categories	<ul style="list-style-type: none"> ◦ Graduate Assistants (various categories)
Professional Staff	Librarians, Curators, and Archivists	<ul style="list-style-type: none"> ◦ Other professional (support/service)
	Student and Academic Affairs and Other Education Services Occupations	<ul style="list-style-type: none"> ◦ Other professional (support/service) ◦ Technical and paraprofessional
	Management Occupations	<ul style="list-style-type: none"> ◦ Executive/administrative/managerial
	Business and Financial Operations Occupations	<ul style="list-style-type: none"> ◦ Other professional (support/service)
	Computer, Engineering, and Science Occupations	<ul style="list-style-type: none"> ◦ Other professional (support/service) ◦ Technical and paraprofessional
	Community, Social Service, Legal, Arts, Design, Entertainment, Sports, and Media Occupations	<ul style="list-style-type: none"> ◦ Other professional (support/service) ◦ Technical and paraprofessional
	Healthcare Practitioners and Technical Occupations	<ul style="list-style-type: none"> ◦ Other professional (support/service) ◦ Technical and paraprofessional
Service/Support Staff	Service Occupations	<ul style="list-style-type: none"> ◦ Technical and paraprofessional ◦ Service/Maintenance
	Sales and Related Occupations	<ul style="list-style-type: none"> ◦ Not specifically mentioned in IPEDS
	Office and Administrative Support Occupations	<ul style="list-style-type: none"> ◦ Clerical and secretarial
	Natural Resources, Construction, and Maintenance Occupations	<ul style="list-style-type: none"> ◦ Service/Maintenance
	Production, Transportation, and Material Moving Occupations	<ul style="list-style-type: none"> ◦ Skilled Crafts ◦ Service/Maintenance

NOTE: In 2012-13, IPEDS changed the reporting categories for employees to match the Bureau of Labor Standard Occupational Categories. We have grouped these into broad categories for convenience.